

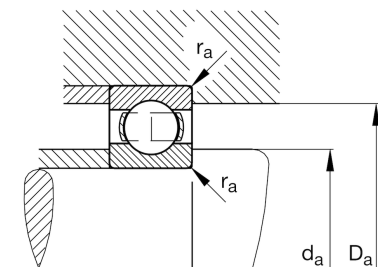
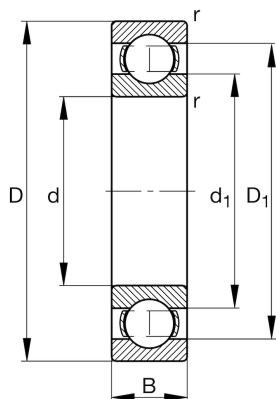
FAG

**6216-H-SN**

Deep groove ball bearing

Schaeffler ID:  
0948198150000Deep groove ball bearing 62...H, single  
row, H-Series, steel sheet metal cage

## Technical information

**Main Dimensions & Performance Data**

d	80 mm	Bore diameter
D	140 mm	Outside diameter
B	26 mm	Width
$C_r$	65.910 N	Basic dynamic load rating, radial
$C_{0r}$	50.110 N	Basic static load rating, radial
$C_{ur}$	2.950 N	Fatigue load limit, radial
$n_G$	6.700 1/min	Limiting speed
$n_{gr}$	5.600 1/min	Reference speed
	1,47 kg	Weight

**Dimensions**

$r_{min}$	2 mm	Minimum chamfer dimension
$D_1$	120,5 mm	Shoulder diameter outer ring
$d_1$	99,2 mm	Shoulder diameter inner ring

**Mounting dimensions**

$d_{a min}$	91 mm	Minimum diameter shaft shoulder
$D_{a max}$	129 mm	Maximum diameter of housing shoulder
$r_{a max}$	2 mm	Maximum fillet radius

**Calculation factors**

$f_0$	14,9	Calculation factor
-------	------	--------------------

**Temperature range**

$T_{min}$	-30 °C	Operating temperature min.
$T_{max}$	120 °C	Operating temperature max.